

## Transporter™ Data Shuttle

### Leave Your Laptop Home

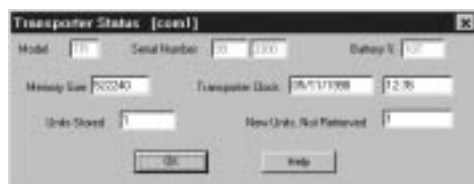
Our Transporter data shuttle is the pocket-portable solution to managing up to 32 DataScribe loggers in the field. Its convenient display and 2 button keypad lets you easily retrieve a data record, view a logger's status report, restart a DataScribe, or display a Transporter status report. Plus, its large memory protects your valuable files against data loss even if you remove the battery for 10 years! *No other data shuttle includes all these features in such a compact and easy to use unit!*

### Some Transporter features:

- ◆ retrieves data without stopping the logger!
- ◆ displays current & min/max logger readings
- ◆ displays logger alarms and battery use
- ◆ displays complete Transporter status
- ◆ able to restart logger with or without a delay
- ◆ archives retrieved files until deleted
- ◆ 9V battery replaceable without data loss
- ◆ use with all present & future DataScribes!
- ◆ very fast data retrieval
- ◆ Y2K compliant and CE certified

### The Perfect Partner

Transporters work hand-in-hand with our powerful WinDataSoft logger management and data analysis program. Back in the office, simply remove the Transporter from your pocket and connect it to a PC running WinDataSoft. A complete list of the stored files is displayed. Just click the files you desire and they're quickly uploaded to your PC. It's just that easy! All files are archived to prevent data loss until *you* delete them from the Transporter.



### Transporters are perfect for:

- ◆ managing agricultural field loggers
- ◆ quick logger checks on loading docks
- ◆ data retrieval using unskilled labor
- ◆ monitoring transit & storage loggers

### Superior Data Analysis

Once your data is in WinDataSoft you can:

- ◆ annotate your graph & save it with the data
- ◆ overlay multiple plots
- ◆ define the plot scales for each sensor
- ◆ choose plot colors & symbols
- ◆ export and browse all data, or daily min/max
- ◆ create custom plot, scale & calculation setups

### Powerful Calculations Built-in

Quite struggling with exports and spreadsheets! Our software is the *only one* that provides calculations for Agriculture, HVAC, Pharmaceuticals, Hospitals, & Museums, *and treats them just like any of the physical sensors!* Some of the many calculations include:

- ◆ Dew point, Wet bulb & Abs Humidity
- ◆ Heating/Cooling Deg-days & Comfort Index
- ◆ Wood equilibrium moisture content
- ◆ Shelf Life (Permanence ratio)
- ◆ Mean Kinetic Temperature
- ◆ Growing Degree Days (10 methods)
- ◆ Mildew Index (3 methods)

## Transporter Functions

Logger Report  
 Retrieve Logger  
 Restart Logger  
 Upload files to WinDataSoft  
 Transporter Information Report  
 Delete Stored Files

## Transporter Report Displays:

Total memory used  
 Total files stored  
 Number of new files  
 Remaining battery life  
 Transporter identification

## Logger Report Displays:

DataScribe identification  
 Current state of the logger  
 Remaining battery life  
 Percent memory used  
 Latest logger reading for each channel  
 Minimum & maximum readings for each channel  
 Alarm status for each channel

## General

Memory: 522 Kbytes (Model TR-4)  
 1,043 Kbytes (Model TR8)

Display: 2 line x 8 character LCD

Clock Accuracy: +/- 5 seconds per day

Battery: 9V Alkaline or U9VL Lithium  
 Life: Alkaline: 9 months (typical)  
 Lithium: 2 years (typical)

Enclosure: ABS, 4.2 x 2.4 x 0.9 inches  
 106 x 61 x 23 millimeters  
 weight: 5 ounces

## Features

Memory and setup are saved if battery is removed.

Fast data retrieval doesn't interrupt logger operation!

Compatible with all present and future DataScribe models.

Displays current and min/max readings, battery %, and alarm status of an attached DataScribe.

Fully Year 2000 Compliant.

CE, ICES-003, and FCC certified.

Full 2 year warranty and "No Risk" satisfaction guarantee!

## Compare our Transporter to the Onset Shuttle

Feature	Transporter	Shuttle
Supports all loggers	Yes	No
Retrieve data without stopping logger	Yes	No
Time to retrieve 32K logger	45 sec.	5 min.
Memory size (Kbyte)	522 or 1043	468
Built-in display	Yes	No
Show logger ID	Yes	No
Show battery %	Yes	No
Show current reading	Yes	No
Show min/max readings	Yes	No
Show alarms	Yes	No
Show % memory used	Yes	No
Archive off-loaded files	Yes	No
Clock accuracy (weekly)	30 seconds	60 seconds
Restart logger	Yes	Yes
Restart with delay	Yes	No
Pocket size	Yes	Yes
Standard 9V battery	Yes	No

## No Risk

Prove to yourself that an Avatel system is the perfectly affordable solution for your application. Take advantage of our 30 day satisfaction guarantee. If you're not completely satisfied for any reason, just return it for a complete refund. Give us a call at (707) 961-1016, or drop by our Web site at <http://www.avatel.com>.

Your Avatel Representative:

## Avatel, Inc.

32851 Leof Lane, Fort Bragg, CA 95437  
 (707) 961-1016, Fax: 961-0576 [www.avatel.com](http://www.avatel.com)  
 DataScribe, WinDataSoft and Transporter are trademarks of Avatel, Inc.  
 Onset and HOB0 shuttle are trademarks of Onset Computer Corporation.  
 Copyright 1998 Avatel, Inc. All Rights Reserved.  
 Specifications subject to change without notice.